



URBAN  
SQUARE

# RESIDENTIAL

Glass is the product of choice for Domestic homes. At Urban Square we offer Roof Lights, Bi-Fold Doors, Balustrades, Staircases, Shower Screens and Painted splashbacks. All of which add light or bring colour to your home.

[www.urbansquare.net](http://www.urbansquare.net)

We are dedicated to giving you the very best product and service with a focus on quality and affordability.

Urban Square offer a wealth of knowledge and experience within the architectural glass industry. Our friendly team is made up of project managers and skilled operatives, many who have worked in the glass industry for over 25 years.

We serve customers from across the UK, building long term relationships as their glazing systems partner for current and future projects.

We work with architects, designers, main contractors, interior fit out companies and direct with end users in Commercial, Industrial and the Domestic sector. We offer the widest range of glazing systems on the market and are not tied to any one manufacturer enabling us to ensure each project is matched with the optimum fitting system.

Our ethos is simple, to provide the best solution at the most affordable price.

We hope you enjoy our finished product as much as we enjoy providing them to you. If you have any questions or comments, please don't hesitate to contact us.

The use of glass in balustrades and balconies brings unobscured panoramic views coupled with sleek, minimalist design.

## BALUSTRADES / BALCONIES UP TO 3KN LOAD

### Frameless

Individual frameless glass panels allow you to enjoy an unrestricted panoramic view. With options of continuous aluminium channels or stainless steel button fixings and spigots to support the glass at the base you can create continuous runs of vertical glass to give an almost invisible appearance, especially when using low iron glass. The option of a stainless steel or wooden handrail can be included at the time of installation or at a later date.

### Point Fixing

For Juliet balconies and recessed glass panels we offer point fix systems using circular button fixings or square/radius edge clamps to give a minimalist appearance whilst conforming to building regulations.iron glass. The option of a stainless steel or wooden handrail can be included at the time of installation or at a later date.



## GET IN TOUCH TODAY FOR A QUOTE

Please contact us for a no obligation quote and survey if required.  
Call 01707 657872 or email [sales@urbansquare.net](mailto:sales@urbansquare.net)

Our glass balustrade systems are designed to work in all domestic applications with either a seamless appearance or with posts and handrails for a more engineered look.

## BALUSTRADES / BALCONIES UP TO 3KN LOAD

### Post and Panel

Vertical steel baluster posts with pre-fitted glass clamps and glass panels in-between give a more contemporary look to the design with the option of a matching handrail to the top. Customizable elements such as round or square posts and handrails in satin or polished finish allow you to further enhance the appearance. For Juliet balconies, we offer rail systems which clamp the top and bottom or both sides of the glass with the top rail also forming a handrail.

### Tensioned Cable

For balconies and balustrades we offer tensioned cable systems with eye bolts to end posts and through holes to intermediates allowing 4mm or 6mm dia. stainless steel cables to be tensioned end to end. Horizontal cables give an architectural look which fits in well with coastal and riverside projects. For a more contemporary look you can mix glass panels and cables between the posts to give the appearance that some bays are totally open. Customizable elements such as round or square posts and hand rails in satin or polished finish allow you to further enhance the appearance.



## GET IN TOUCH TODAY FOR A QUOTE

Please contact us for a no obligation quote and survey if required.  
Call 01707 657872 or email [sales@urbansquare.net](mailto:sales@urbansquare.net)

Glass is used in staircase construction in a number of different ways. To form the outer balustrade or the steps themselves or the dividing partition between floors on a turning staircase.

## STAIRCASES

### Frameless

Individual glass panels form an invisible balustrade, providing a minimal and clean appearance, allowing for an unobscured view. This method works exceptionally well with today's desire for open plan homes or where the staircase is a feature within the space. The glass panels can be housed within an aluminium base channel secured to the stringer or clamped between a double stringer with point fixings securing the glass to the inside stringer. This makes the fixing method invisible allowing you to maintain a clean design. The use of low iron glass, with less colour to the body and edges of the glass panels really adds to the almost invisible appearance. The option of a stainless steel or wooden handrail can be included during or post installation.

### Channel

Similar in design to a post and panel system but without the glass clamps to the edges. The baluster posts, handrail and stringer have a groove, allowing the glass to be housed on all edges or on two or three edges if desired. This allows the staircase and landing balconies to run into one another seamlessly and also allows for thinner glass panels to be used due to the addition of posts and handrails.



## GET IN TOUCH TODAY FOR A QUOTE

Please contact us for a no obligation quote and survey if required.  
Call 01707 657872 or email [sales@urbansquare.net](mailto:sales@urbansquare.net)

Whether it's Straight, L-shape, U-shape, Winder or Curved we can provide the glass solution to meet your needs.

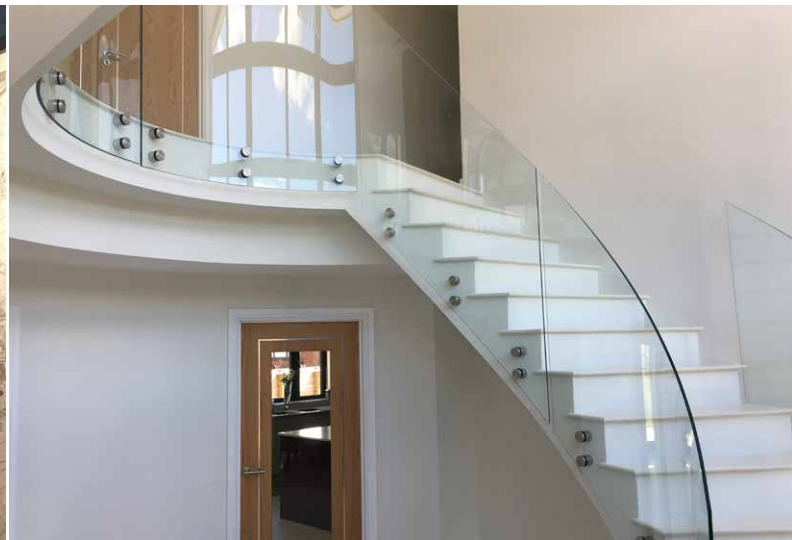
## STAIRCASES

### Post and Panel

Vertical baluster posts in timber or steel with square or D shape clamps to hold the glass panels in-between bring about a more contemporary look with the option of a matching handrail to the top. Customizable elements such as round or square posts and hand rails allow you to further enhance the appearance.

### Point Fixing

For a simple and striking solution we use circular stainless steel buttons which clamp the glass panels to the stringer giving a minimalist design with or without a handrail. The individual glass panels are clamped along the base with small gaps in between. This solution is ideal for curved and winder staircases and adds an architectural look to the design showing off the fixings as much as the glass itself.



## GET IN TOUCH TODAY FOR A QUOTE

Please contact us for a no obligation quote and survey if required.  
Call 01707 657872 or email [sales@urbansquare.net](mailto:sales@urbansquare.net)

Glass shower screens are becoming “the norm” in modern home design. The use of frameless glass panels from floor to ceiling, either fixed or hinged allows for open and roomy shower areas. Rooms can be divided with the use of glass partitions rather than building walls which obscure light and reduce space.

## SHOWER SCREENS / WET ROOMS

### Individual

Individual frameless glass panels either from floor to ceiling or from the floor only can be used to create a barrier to the wet room with a wide opening for unrestricted access. The glass can be fixed inside metal channels, recessed or face fixed to the tiled wall or secured in glass clamps to one, two or 3 sides. If the panels do not go full height to the ceiling, horizontal support bars from the wall keep the panel rigid if knocked. End posts can also be incorporated for design or for easy identification of where the glass ends.

### Wet Rooms / Steam Rooms

Dividing walls and full enclosures can be formed using clamp fittings and channels with hinged doors and over panels. Curved or flat, clear, tinted or obscure, all-glass options are available. Larger spaces can be sub-divided using glass walls to create toilets and showers with a mix of clear and frosted glass allowing the maximum amount of light to transmit into each space with privacy where needed. Mirrors can also be used to bounce light and maximise the feeling of space.



## GET IN TOUCH TODAY FOR A QUOTE

Please contact us for a no obligation quote and survey if required.  
Call 01707 657872 or email [sales@urbansquare.net](mailto:sales@urbansquare.net)

With a wide range of systems on offer the requirement for glass needs to change to meet UK Building Regulations as well as personal choice by way of look and by way of economy.

## GLASS SELECTION

### Standard Toughened Glass

Gives a slight tint to the glass surface with a darker green to the edge. This is available in 12mm, 15mm and 19mm thickness. Toughened glass is up to 5 times stronger than standard annealed glass making it much harder to break. If it does break the glass shatters in very small pieces posing a minimal risk.

### Low Iron Toughened Glass

Pilkington Optiwhite™ gives a truly clear appearance with a clear surface and slight green tint to the edge. This is an upgrade option available in 12mm, 15mm and 19mm thickness. This is widely used in internal stair cases and frameless balustrades where the desire is to not see the glass at all.

### Toughened Laminated Safety Glass

Brings additional safety. This is made up of thinner sheets of standard or low iron toughened glass which are laminated together allowing it to remain intact when broken as the plastic interlayer prevents the panel from falling apart in the same way as a car windscreen. With the advantage of being made up of toughened glass panels it is ideal for applications where the mess caused by broken glass poses an additional risk. This is more suitable for high level applications where the integrity of the panel is required or for swimming pools and food courts where small pieces of broken glass are a serious hazard in themselves. Laminated options are available in 13.5mm, 17.5mm, 21.5mm and 25.5mm thickness.



## GET IN TOUCH TODAY FOR A QUOTE

Please contact us for a no obligation quote and survey if required.  
Call 01707 657872 or email [sales@urbansquare.net](mailto:sales@urbansquare.net)



For a contemporary appearance, glass rooflights provide a clean and high quality feel.

## ROOFLIGHTS

We offer flat, curved and lantern rooflights in a number of designs to fit directly onto an upstand or kerb. With options of fixed, hinged and walk on designs a glass rooflight suits all requirements, even where a means of access such as a fire escape is required.

Flat rooflights come in a range of styles to suit your project. These include, Fixed, Hinged, Sliding, Walk-on, Access, AOV Smoke Vents, Multi-section as well as Bespoke rooflights. The standard glass specification for these is with an outer Heat Soak Tested Toughened panel with an Argon Filled cavity and inner Low-E Heat Soak Tested Toughened or Laminated panel. They can be supplied in both double and triple glazed versions.

Roof lanterns offer that special something to your home. Not only does the lantern fill your home with light, bringing the outside in, it also adds to the design with its angular construction and clean lines. With narrow aluminium sections, hidden fixings and the option for different colour finishes to the inside and outside sections a roof lantern offers a cost effective solution to brighten up your home.

Designed with traditional timber lines and constructed from modern materials. A Roof Lantern gives the best-looking finish whilst exceeding standards in strength, warmth, and security. Thermally broken aluminium frames isolate the outer and inner frame with the addition of high performance glass units to reduce heat transfer in both directions. The design of a lantern allows for strength and scale with sizes up to 6m x 4m as standard.



## GET IN TOUCH TODAY FOR A QUOTE

Please contact us for a no obligation quote and survey if required.  
Call 01707 657872 or email [sales@urbansquare.net](mailto:sales@urbansquare.net)